



St. Mary's Catholic Primary School

Hall Road, Scarisbrick, Lancashire. L40 9QE

Tel: (01704) 880 626

Website: www.stmaryscps.co.uk

Email: head@st-marys-scarisbrick.lancs.sch.uk

Head teacher: Mrs Joanne Preston

Friday, 6th February, 2026

This Sunday's Gospel shows how the message of Jesus can change everything in the world. Jesus reminds us that we are not here only for ourselves – we're here for others: to improve the lives of those around us with love, care and goodness and to bring God's light so we can be 'the salt of the earth.'

Dear Lord Jesus,

You are the source of all goodness. Thank you for all the people who help us to grow in goodness and become the best that we can be.

Amen.



The Sunday liturgy is available weekly on the Wednesday Word by following the link on the school website <https://www.stmaryscps.co.uk/wednesday-word/>

This week in school...

Dear Parents and Carers,

I wanted to take this opportunity to thank you for your support during this week's Ofsted inspection. We were incredibly proud of how confidently and calmly the children engaged with the process, and grateful for the positive messages many of you shared with the inspectors.

We will share the final report as soon as it is released. In the meantime, thank you once again for your continued encouragement and partnership.

Kind regards,

Mrs Preston & the staff of St Mary's



Living and Learning Together - Shining in our Faith



Class 1 'Shining Stars'

This week in Phonics, our Nursery children have been continuing their Phase 1 journey by looking at different environmental sounds that they can hear. Reception & Year 1 have been reviewing and consolidating all of the phonic knowledge that they have covered this half term.

In RE, we have been recognising how Jesus welcomes everyone. To help us with this, we have been talking about all of the different ways that we welcome people into school, our homes and our Church.

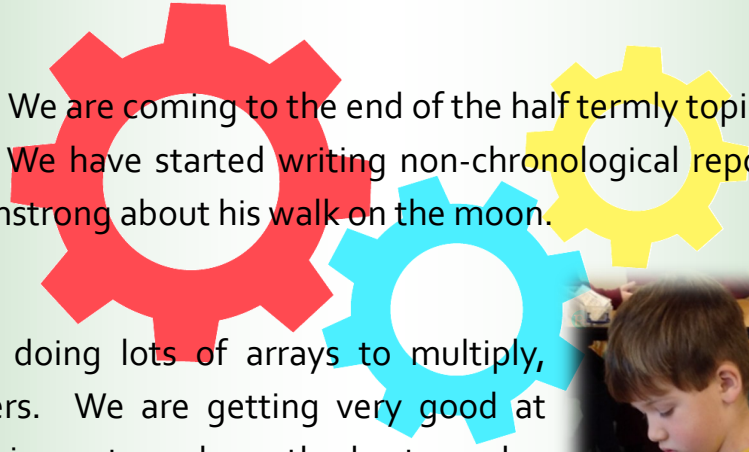
Across our class this week, we have covered lots of different things in Maths! Some of us have been learning about shapes with 4 sides and some of us have been learning about quarter, half, three-quarter and full turns.

Class 1 have enjoyed diving into some new books in the classroom this week. Their particular favourite being our new non-fiction texts about animals around the world!





Class 2 'Trailblazers'



What another busy week. We are coming to the end of the half termly topics so there have been lots of writing opportunities. We have started writing non-chronological reports on animals and have written a diary as Neil Armstrong about his walk on the moon.

In Maths we have been doing lots of arrays to multiply, double and halve numbers. We are getting very good at choosing the right equipment and methods to solve calculations. Year 3 have been learning the grid method to solve harder multiplication problems and are doing very well.

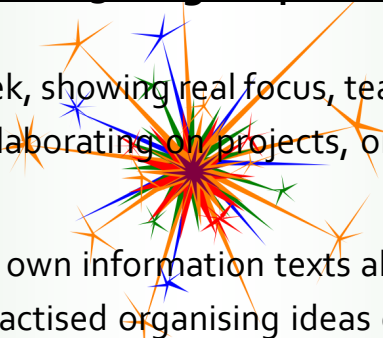


After some weeks learning about the artist Barbara Hepworth and looking at her sculptures, we planned, painted and created 3D sculptures of our own. We are all very pleased at how they look on display.





Class 3 'Bright Sparks'



The children have worked hard all week, showing real focus, teamwork, and determination. Whether they were tackling new concepts, collaborating on projects, or simply giving their best effort, their enthusiasm has been a joy to see.

The children have been creating their own information texts all about planets and the solar system. They've explored fascinating facts, practised organising ideas clearly, and worked hard to write like real non-fiction authors.

In our Anglo Saxons topic, the children have been designing their own time capsules to show what they believe is the lasting legacy of the Anglo Saxons. Their creativity and historical thinking have been brilliant to see.

On Monday, the children were visited by Mrs Molyneux and her daughter Alice, who shared stories from their incredible travels to Lourdes. The class listened beautifully and were fascinated by the places they had travelled, the people they met, and the meaningful experiences they described. It was a wonderful opportunity for the children to broaden their understanding of the world and ask thoughtful questions.





Attendance



Attendance for the week ending 06.02.26

	No. of pupils	Attendance (%)	Rank
Class 1	16	96.2%	3
Class 2	17	97.06%	2
Class 3	23	97.83%	1



Celebration Assembly



	Special Award - For spreading happiness	Good Work Award
Class 1	Martha W	Clay W
Class 2	Alexandra B	Emily H
Class 3	Erin C	Freddie O
Headteacher's award	Lyle W	Angus P
Mathematician of the week	Jenson L	
Presentation award	Connie R	
Attendance Award	Class 3 — 97.83%	

Important Dates



Wednesday, 14th January	KS2 Rugby Club begins (until 11th February)
Friday, 16th January	Friday Fitness Club every Friday at 8.15am
Tuesday, 10th February	Safer Internet Day (assembly for children and parents at 9am)
10th—13th February	Scholastic Book Fair (3.20—4pm)
Friday, 13th February	Break up for half term

Have a lovely weekend! From Mrs Preston & the staff of St Mary's

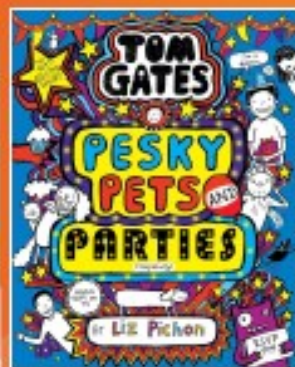
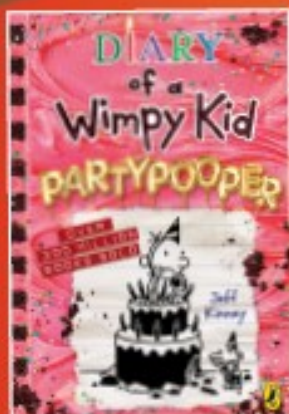
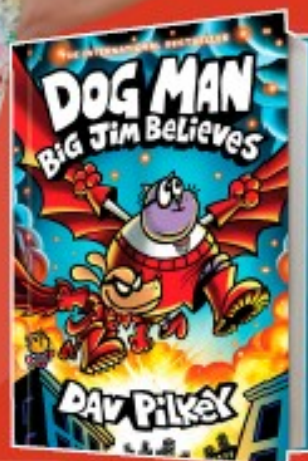
SCHOLASTIC TRAVELLING BOOKS

Every book you buy earns **FREE BOOKS** for our school!

COME TO OUR BOOK FAIR

AND FIND YOUR NEXT FAVOURITE READ!

Art © Dan Pinks, DDB, MANTM™ Dan Pinks



GO ALL IN.

National Year of Reading 2020

DATE:

TIME:

LOCATION:

Scan to pay securely online!



CAMP VENUES



TARLETON
ACADEMY



ORMSKIRK
SCHOOL

ONLY
£22.50
per day



ENDEAVOUR
COMMUNITY



ACTIVITY
CAMP



with
WEST LANCASHIRE
SPORT PARTNERSHIP



FEB HALF TERM

MON 16TH - FRI 20TH

Arts & Crafts, Athletics,
Basketball, Dance,
Dodgeball, Football,
Invasion and
Target Games, Swimming*
and much more!

*Tarleton only

Open to
5 - 12
year olds

8.30AM
until
4.30PM



To book your child's place please visit
<https://ec.schoolactivity.co.uk>
and if you have any queries
please email

Learn to Ride



The WLSP Learn to Ride and Level 1 programme is a great introduction to cycling for primary aged children.

Available for ages 7+

ABOUT

Our fully qualified and experienced instructors will aim to improve the participants riding ability and overall confidence.

Children must be accompanied by a responsible adult. Sessions take place on the tennis courts at Burscough Priory Academy. Please access the Main Car Park and make your way to the school's reception where our instructor will be there to greet you.

Please feel free to book multiple sessions and for more practice!

*** A limited number of helmets can be provided, but we encourage you to bring your own if possible - please contact us first before booking if you require a helmet

*** Children must bring their own bike ***



LOCATIONS AND DATES

Burscough Priory Academy,
Friday 20th February 2026

Learn To Ride, 9am - 12pm (3 x 1 hour sessions)
Level 1, 1pm - 2.30pm (£7.50)

£5 PER 1 HOUR SESSION

To book; <https://ec.schoolactivity.co.uk/>
For more info call: 01704 377982

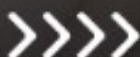


Parents and Carers, tell us about your experience of using childcare in Lancashire



Scan the QR code to
access our short survey

lancashire.gov.uk/childcare





St Mary's Catholic Primary School

Living and Learning Together – Shining in our Faith

Religious Education Spring Term Newsletter 2026

Important dates this term

MARY, MOTHER OF GOD

1st January

THE EPIPHANY OF THE LORD

6th January

The Epiphany commemorates the visit of the Three Kings to the infant Jesus.

There will be mass on Wednesday, 7th January St Elizabeth's Church at 9.30am for families and children from Nursery - Y6.

THE BAPTISM OF THE LORD

11th January

The Baptism of the Lord commemorates Jesus' baptism in the Jordan River by John the Baptist.

THE PRESENTATION OF THE LORD

2nd February

The Presentation of the Lord, also known as Candlemas, commemorates the time when Mary and Joseph brought Jesus to the Temple in Jerusalem 40 days after his birth

SHROVE TUESDAY

17th February

ASH WEDNESDAY

18th February

Ash Wednesday is a day of reflection, marking the beginning of Lent and a 40-day period of preparation for Easter

ST DAVID

2nd March

MOTHERING SUNDAY

15th March

ST PATRICK

17th March

THE ANNUNCIATION OF THE LORD

25th March

The Annunciation of the Lord celebrates the moment when the angel Gabriel announced to Mary that she would conceive and give birth to Jesus Christ.

PALM SUNDAY OF THE PASSION OF THE LORD

29th March

Palm Sunday recalls the story of Jesus' arrival in Jerusalem, where people greeted him by waving palm branches and laying their cloaks in his path

MAUNDY THURSDAY

2nd April

Maundy Thursday commemorates the Last Supper of Jesus Christ and the washing of his disciples' feet.

GOOD FRIDAY

3rd April

EASTER SUNDAY

5th April

RELIGIOUS EDUCATION
SPRING TERM 2026
TO KNOW YOU MORE CLEARLY

Dear Parent(s)/Carer(s),

Our classes will be studying the new Religious Education Directory curriculum that covers the themes of 'Galilee to Jerusalem' and 'Desert to Garden'.

GALILEE TO JERUSALEM
(5TH January – 13th February)

Class 1 GALILEE TO JERUSALEM – The Wise Men visit Jesus. Jesus came to show God's love and welcomes everyone. Jesus takes care of everyone.

Class 2 GALILEE TO JERUSALEM – The children will deepen their knowledge about who Jesus is and understand how he teaches about the nature of God through parables and miracles.

Class 3 GALILEE TO JERUSALEM - The children will consider Jesus' question to Peter, 'Who do you say I am?' They will also reflect on Jesus as the servant Messiah and how he announces the Kingdom of Heaven to those at the edge of society.

**SUGGESTIONS FOR
HOME ACTIVITIES**

Read Bible stories
together or
encourage children to
read a
child's Bible.

DESERT TO GARDEN
(23rd February – 27th March)

Class 1 DESERT TO GARDEN – Jesus wants us to care for others in Lent. Jesus died on a cross. Jesus rose and we celebrate.

Class 2 DESERT TO GARDEN – The children will revisit scripture from the previous year to consolidate learning about the events of Holy Week. They will also explore how Lent is a time of reconciliation and forgiveness.

Class 3 DESERT TO GARDEN - The children will explore Lent's themes of forgiveness and reconciliation and the idea that devotion to God leads a person to do good works. They will also look at Holy Week in St Matthew's gospel.

**SUGGESTIONS FOR
HOME ACTIVITIES**

As a family talk about
how you are going to
practice self-giving for
the rest of the season of
Lent. You may decide to
give up biscuits or cakes
and donate the money to
a charity. Ask your
child/ren what they are
doing in school to focus
on Lent and self-giving.

School Parking

Have you considered:

- Walking or cycling to school instead? This is a great way to contribute to a child's 60 minutes of activity a day and is easy to incorporate into your daily routine. Try it once a week at first and see how easy it can be.
- Parking nearby or getting off the bus two stops earlier and walking the rest of the way. If you live too far away to walk or need your car for your commute to work you can still walk part of the way. Adults in England should aim to take part in at least 150 minutes of moderate intensity physical activity each week.
- Car sharing is a great way to reduce congestion and save you pennies. Team up with other parents or carers who live nearby- share the cost and halve the hassle.

If you have a parking concern outside of your school report it to parking@lancashire.gov.uk

For more information on this leaflet please email the Road Safety Team at roadsafetyschool@lancashire.gov.uk



Better Health healthier families

Sign up at nhs.uk/betterhealth



SCHOOL



lancashire.gov.uk



Lancashire
County Council



A Guide to Parking Safely at Our Schools

Inconsiderate and dangerous parking around our schools has become a big problem, putting the safety of children and others at risk. We all want to keep our children safe around schools, so here are some top tips on how you can make a difference.

How can you help?

- ✓ Keep your speed down
- ✓ Turn your engine off - do not idle
- ✓ Leave the middle of the road free, with enough room for other road users to easily pass through
- ✓ Make sure your child leaves and enters your vehicle safely onto the pavement
- ✓ Check for pedestrians and cyclists before opening a car door
- ✓ Leave enough room on pavements for pedestrians, pushchairs & wheelchairs to get past
- ✓ Take care when reversing
- ✓ DO NOT PARK ON ZIG ZAG LINES

Please keep restricted areas clear

- ✓ Zig zags and school entrances
- ✓ Dropped kerbs
- ✓ Resident's driveways
- ✓ Opposite or within 10 metres of a junction- so that children can see cars and cars can see children.

Your questions answered

What would happen if I did park in a restricted area?

If you park in a restricted area you are putting children's lives in danger and for this reason school parking is regularly monitored and enforced. If you park in a restricted area you could receive a £70 fine.

Am I okay to stop on zig zag markings if I am only there a few minutes?

No, under no circumstances should you stop on zig zag markings at any time, these are there to protect school entrances and leave a clear view of the street for pedestrians.

Please park considerably around our schools and keep our children safe!

Don't forget...

Congestion around schools is one of the main reasons given for dangerous parking and there are other ways you could do the school run...



Never park on zig zags or block school entrances

St Mary's Catholic Primary School

Living and Learning Together – Shining in our Faith



St Mary's School Holiday Dates 2025/ 26

Autumn Term 2025

INSET: Monday 1 September 2025

INSET: Tuesday 2 September 2025

Mid Term Closure: Monday 27 October- Friday 31 October 2025 (inclusive)

Closure after school on: Friday 19 December 2025

Number of openings: **75**

Spring Term 2026

Re-open on: Monday 5 January 2026

Mid Term Closure: Monday 16 February - Friday 20 February 2026 (inclusive)

Closure after school on: Friday 27 March 2026

Number of openings: **55**

Summer Term 2026

Re-open on: Monday 13 April 2026

May Day Closure: Monday 4 May 2026

Mid Term Closure: Monday 25 May - Friday 5 June 2026

Closure after school on: Monday 27 July 2026

INSET: Thursday, 23 July 2026

INSET: Friday, 24 July 2026

INSET: Monday, 27 July 2026

Number of openings: **65**

Total number of openings – 195

(190 days for pupil + 5 INSET days for staff)