



St. Mary's Catholic Primary School

Hall Road, Scarisbrick, Lancashire. L40 9QE

Tel: (01704) 880 626

Website: www.stmaryscps.co.uk

Email: head@st-marys-scarisbrick.lancs.sch.uk

Head teacher: Mrs Joanne Preston

Friday, 27th March, 2026

"This week alone, unique in the full sense of the word, is the week of the Lord's Passion. It is Holy Week."

St John Paul II



The Sunday liturgy is available weekly on the Wednesday Word by following the link on the school website <https://www.stmaryscps.co.uk/wednesday-word/>

This week in school...

Dear Parents,

We have enjoyed a truly wonderful final week of term. Class 2 delighted us all with their beautiful performance of 'Rise and Shine' — a joyful celebration of the season of spring.

On Thursday, we began our awards assembly with a thoughtful reflection on Jesus' journey to the cross. The children listened and prayed with such reverence. Following the assembly, we continued our community spirit by taking part in our Big Lent Walk for CAFOD. Thank you to everyone who was able to join us.

We were also surprised by a very special delivery from Massam's this week — a sunflower growing kit for every child in the school. Please take care of your sunflower over the Easter break and send us a photo once it has fully grown. Let's hope St Mary's produces a winner! A huge thank you to Mr Massam for this thoughtful and generous gift.



Living and Learning Together - Shining in our Faith

A wonderful week in St Mary's!

In our end of term assembly, we celebrated the remarkable progress and achievements of our wonderful children. We are incredibly proud of the dedication and commitment they show in their learning, both at home and in school.

We also celebrated the children who achieved 100% attendance this term, as well as those who have maintained 100% attendance for the entire academic year.



The CAFOD Big Lent Walk 2026

The whole school stepped out on their Big Lent Walk in support of the wonderful work of CAFOD. The children organised a raffle, led the walk, and rounded off the morning with a delicious hot cross bun treat. Thank you to all the families who joined us—we truly appreciate your support.





Class 1 'Shining Stars'

Class 1 have continued to make us extremely proud with how hard they have worked during this busy Spring Term. Our older children have shown their maturity by supporting our newest and youngest children into our class over the last few weeks.

We have enjoyed some planting this week, starting with cress, and then our sunflower seeds that were kindly donated by Massams.

As well as coming to the end of their current topics, Class 1 have been exploring the Easter themed enhancements to their classroom this week. We have made Easter cards for our families, made chocolate crispy cakes, taken part in an egg hunt, painted decorations and much more!

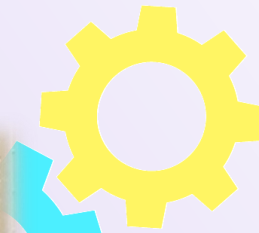
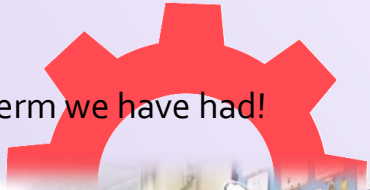
Class 1 have made the most of our musical instruments by putting performances on for each other outside on our stage!



It was wonderful to end the week celebrating our Spring Term award winners and going on the Big Lent Walk with our families and friends.



Class 2 'Trailblazers'



What a busy last week of term we have had!



On Monday we had our dress rehearsal for the Easter play followed by two very successful performances for our friends and families on Wednesday. We really enjoyed putting on our show and we hope that everyone enjoyed watching it.

On Tuesday we had an assessment for our Materials topic in Science but followed it with some Forest School. We learnt how to use sand and stones of different sizes to filter dirty water and we were very surprised to see how clean the water became.

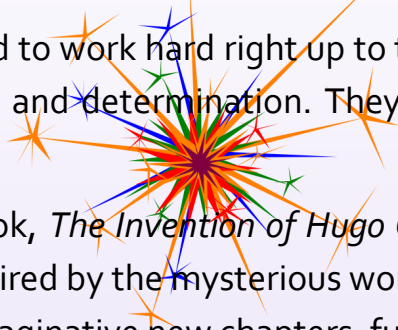


After that we had an Easter Egg hunt finding lots of eggs with words on that spelt out different sentences.

On Thursday we enjoyed our big Lent CAFOD walk followed by some yummy treats and drinks.



Class 3 'Bright Sparks'



The children in Class 3 have continued to work hard right up to the end of term. I would like to thank them for all their effort, enthusiasm, and determination. They should be very proud of everything they've achieved.

We have really enjoyed our class book, *The Invention of Hugo Cabret*. This week, the children have written their own exciting stories inspired by the mysterious world of automatons. They have used all of their new writing skills to create imaginative new chapters, full of creativity and detail.

In Design Technology, the children have completed their tote bags and took great pride in adding their own details and motifs. Their finished creations look fantastic, and they showed real care and imagination throughout the process.



Our Health and Well-Being focus in PE has taught the children the importance of keeping fit both mentally and physically. They have enjoyed developing new skills such as confidence, resilience, and teamwork, and it has been wonderful to see them grow in self-belief as the term has progressed.





Awards Assembly



	Progress Award	Achievement Award
Class 1	Emma O	Isabella E
Class 2	Jenson L	Emily H
Class 3	Connie R	Cooper G

100% Attendance Award for the Spring Term

Class 1: Eleanor B, Isabella E, Elsie M, Taylor M, Emma O

Class 2: Alexandra B, Eric H, Otto S.

Class 3: Maisy S, Cooper G, Bailey H, Kacper L, Xander L, Emrys Mc, Freddie O, Violet P.

100% Attendance Award for the Autumn and Spring Term

Class 1: Evelyn D, Joe R.

Class 2: Ronan D, Emily H, Fia H, Jenson L.

Class 3: Iris D, Poppy P, Bowen S.



Monday, 13th April	Return to school for the Summer Term
Monday, 4th May	Bank Holiday
Wednesday, 6th May	Whole School Mass for Mary, the Mother of Jesus
Thursday, 7th May	Polling Day (School is fully open)

Happy Easter! From Mrs Preston & the staff of St Mary's

Upcoming PTA Events

**MARCH
16**
*Own Clothes Day for
Easter treats donation*

**MARCH
18**
3.30 - 4.30PM
"Easter bingo"

**APR
30**
3.30 - 4.30PM
"Family quiz night!"

**MAY
21**
3.30 - 5PM
"Family Fun Festival"

**JUN
22**
Donation of teddies for
the toy tombola

**JULY
03**
Donation of bottles for
the tombola and gifts
for the Rainbow Raffle

**JULY
04**
12.30 - 2.30PM
"Summer Fair"

**JULY
22**
12.30 - 1PM
Ice cream van!

**Thank you for
your support!**

St Mary's Catholic
Primary School

Family Quiz Night



Thursday 30 April
3:30pm

- »» Refreshments & Hot Dogs
- »» Family Friendly Quiz
- »» Great prizes to be won



CAMP VENUES



TARLETON
ACADEMY



ORMSKIRK
SCHOOL

ONLY
£22.50
per day



ENDEAVOUR
COMMUNITY



ACTIVITY
CAMP

EASTER CAMP

MON 30TH MAR-

THU 2ND APR

TUE 7TH - FRI 10TH APR

Arts & Crafts, Athletics,
Basketball, Dance,
Dodgeball, Football,
Invasion and
Target Games, Swimming*
and much more!

*Tarleton only



with
WEST LANCASHIRE
SPORT PARTNERSHIP



EASTER

Open to
5 - 12
year olds

8.30AM
until
4.30PM

To book your child's place please visit
<https://ec.schoolactivity.co.uk>
and if you have any queries
please email
holidaycamps@endeavourlearning.org



Learn to Ride



The WLSP Learn to Ride and Level 1 programme is a great introduction to cycling for primary aged children.

Available for ages 7+

ABOUT

Our fully qualified and experienced instructors will aim to improve the participants riding ability and overall confidence.

Children must be accompanied by a responsible adult. Sessions take place on the tennis courts at Burscough Priory Academy. Please access the Main Car Park and make your way to the school's reception where our instructor will be there to greet you.

Please feel free to book multiple sessions and for more practice!

*** A limited number of helmets can be provided, but we encourage you to bring your own if possible - please contact us first before booking if you require a helmet

***** Children must bring their own bike *****



LOCATIONS AND DATES

Burscough Priory Academy,
Friday 20th February 2026

Learn To Ride, 9am - 12pm (3 x 1 hour sessions)
Level 1, 1pm - 2.30pm (£7.50)

£5 PER 1 HOUR SESSION

To book; <https://ec.schoolactivity.co.uk/>
For more info call: 01704 377982

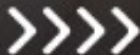


Parents and Carers, tell us about your experience of using childcare in Lancashire



Scan the QR code to
access our short survey

lancashire.gov.uk/childcare





St Mary's Catholic Primary School

Living and Learning Together – Shining in our Faith

Religious Education Spring Term Newsletter 2026

Important dates this term

MARY, MOTHER OF GOD

1st January

THE EPIPHANY OF THE LORD

6th January

The Epiphany commemorates the visit of the Three Kings to the infant Jesus.

There will be mass on Wednesday, 7th January St Elizabeth's Church at 9.30am for families and children from Nursery - Y6.

THE BAPTISM OF THE LORD

11th January

The Baptism of the Lord commemorates Jesus' baptism in the Jordan River by John the Baptist.

THE PRESENTATION OF THE LORD

2nd February

The Presentation of the Lord, also known as Candlemas, commemorates the time when Mary and Joseph brought Jesus to the Temple in Jerusalem 40 days after his birth

SHROVE TUESDAY

17th February

ASH WEDNESDAY

18th February

Ash Wednesday is a day of reflection, marking the beginning of Lent and a 40-day period of preparation for Easter

ST DAVID

2nd March

MOTHERING SUNDAY

15th March

ST PATRICK

17th March

THE ANNUNCIATION OF THE LORD

25th March

The Annunciation of the Lord celebrates the moment when the angel Gabriel announced to Mary that she would conceive and give birth to Jesus Christ.

PALM SUNDAY OF THE PASSION OF THE LORD

29th March

Palm Sunday recalls the story of Jesus' arrival in Jerusalem, where people greeted him by waving palm branches and laying their cloaks in his path

MAUNDY THURSDAY

2nd April

Maundy Thursday commemorates the Last Supper of Jesus Christ and the washing of his disciples' feet.

GOOD FRIDAY

3rd April

EASTER SUNDAY

5th April

**RELIGIOUS EDUCATION
SPRING TERM 2026
TO KNOW YOU MORE CLEARLY**

Dear Parent(s)/Carer(s),

Our classes will be studying the new Religious Education Directory curriculum that covers the themes of 'Galilee to Jerusalem' and 'Desert to Garden'.

GALILEE TO JERUSALEM
(5TH January – 13th February)

Class 1 GALILEE TO JERUSALEM – The Wise Men visit Jesus. Jesus came to show God's love and welcomes everyone. Jesus takes care of everyone.

Class 2 GALILEE TO JERUSALEM – The children will deepen their knowledge about who Jesus is and understand how he teaches about the nature of God through parables and miracles.

Class 3 GALILEE TO JERUSALEM - The children will consider Jesus' question to Peter, 'Who do you say I am?' They will also reflect on Jesus as the servant Messiah and how he announces the Kingdom of Heaven to those at the edge of society.

**SUGGESTIONS FOR
HOME ACTIVITIES**

Read Bible stories
together or
encourage children to
read a
child's Bible.

DESERT TO GARDEN
(23rd February – 27th March)

Class 1 DESERT TO GARDEN – Jesus wants us to care for others in Lent. Jesus died on a cross. Jesus rose and we celebrate.

Class 2 DESERT TO GARDEN – The children will revisit scripture from the previous year to consolidate learning about the events of Holy Week. They will also explore how Lent is a time of reconciliation and forgiveness.

Class 3 DESERT TO GARDEN - The children will explore Lent's themes of forgiveness and reconciliation and the idea that devotion to God leads a person to do good works. They will also look at Holy Week in St Matthew's gospel.

**SUGGESTIONS FOR
HOME ACTIVITIES**

As a family talk about
how you are going to
practice self-giving for
the rest of the season of
Lent. You may decide to
give up biscuits or cakes
and donate the money to
a charity. Ask your
child/ren what they are
doing in school to focus
on Lent and self-giving.

School Parking

Have you considered:

- Walking or cycling to school instead? This is a great way to contribute to a child's 60 minutes of activity a day and is easy to incorporate into your daily routine. Try it once a week at first and see how easy it can be.
- Parking nearby or getting off the bus two stops earlier and walking the rest of the way. If you live too far away to walk or need your car for your commute to work you can still walk part of the way. Adults in England should aim to take part in at least 150 minutes of moderate intensity physical activity each week.
- Car sharing is a great way to reduce congestion and save you pennies. Team up with other parents or carers who live nearby- share the cost and halve the hassle.

If you have a parking concern outside of your school report it to parking@lancashire.gov.uk

For more information on this leaflet please email the Road Safety Team at roadsafetyschool@lancashire.gov.uk



Better Health healthier families

Sign up at nhs.uk/betterhealth



lancashire.gov.uk



A Guide to Parking Safely at Our Schools

Inconsiderate and dangerous parking around our schools has become a big problem, putting the safety of children and others at risk. We all want to keep our children safe around schools, so here are some top tips on how you can make a difference.

How can you help?

- ✓ Keep your speed down
- ✓ Turn your engine off - do not idle
- ✓ Leave the middle of the road free, with enough room for other road users to easily pass through
- ✓ Make sure your child leaves and enters your vehicle safely onto the pavement
- ✓ Check for pedestrians and cyclists before opening a car door
- ✓ Leave enough room on pavements for pedestrians, pushchairs & wheelchairs to get past
- ✓ Take care when reversing
- ✓ DO NOT PARK ON ZIG ZAG LINES

Please keep restricted areas clear

- ✓ Zig zags and school entrances
- ✓ Dropped kerbs
- ✓ Resident's driveways
- ✓ Opposite or within 10 metres of a junction- so that children can see cars and cars can see children.

Your questions answered

What would happen if I did park in a restricted area?

If you park in a restricted area you are putting children's lives in danger and for this reason school parking is regularly monitored and enforced. If you park in a restricted area you could receive a £70 fine.

Am I okay to stop on zig zag markings if I am only there a few minutes?

No, under no circumstances should you stop on zig zag markings at any time, these are there to protect school entrances and leave a clear view of the street for pedestrians.

Please park considerably around our schools and keep our children safe!

Don't forget...

Congestion around schools is one of the main reasons given for dangerous parking and there are other ways you could do the school run...



Never park on zig zags or block school entrances

St Mary's Catholic Primary School

Living and Learning Together – Shining in our Faith



St Mary's School Holiday Dates 2025/ 26

Autumn Term 2025

INSET: Monday 1 September 2025

INSET: Tuesday 2 September 2025

Mid Term Closure: Monday 27 October- Friday 31 October 2025 (inclusive)

Closure after school on: Friday 19 December 2025

Number of openings: **75**

Spring Term 2026

Re-open on: Monday 5 January 2026

Mid Term Closure: Monday 16 February - Friday 20 February 2026 (inclusive)

Closure after school on: Friday 27 March 2026

Number of openings: **55**

Summer Term 2026

Re-open on: Monday 13 April 2026

May Day Closure: Monday 4 May 2026

Mid Term Closure: Monday 25 May - Friday 5 June 2026

Closure after school on: Monday 27 July 2026

INSET: Thursday, 23 July 2026

INSET: Friday, 24 July 2026

INSET: Monday, 27 July 2026

Number of openings: **65**

Total number of openings – 195

(190 days for pupil + 5 INSET days for staff)