



St. Mary's Catholic Primary School

Hall Road, Scarisbrick, Lancashire. L40 9QE

Tel: (01704) 880 626

Website: www.stmaryscps.co.uk

Email: head@st-marys-scarisbrick.lancs.sch.uk

Head teacher: Mrs Joanne Preston

Friday, 24th April, 2026

This Sunday is traditionally known as 'Good Shepherd Sunday'. Part of a shepherd's job is to look after the sheep and help them to stay safe. When we let Jesus lead us, just as a shepherd leads his sheep, he helps us to make the right choices and fills our lives with goodness.

Dear Lord Jesus,

You are the Good Shepherd who knows us by name and guides us through life. Please help us to hear your voice and follow you always.

Amen.

The Sunday liturgy is available weekly on the Wednesday Word by following the link on the school website <https://www.stmaryscps.co.uk/wednesday-word/>



This week in school...

Dear Parents and Carers,

We have been incredibly proud of our Year 6 children this week as they completed a full suite of SATs-style assessments in preparation for May. Throughout the week, they demonstrated an excellent work ethic, focus and determination. To reward their hard work, they enjoyed a wonderful yoga session with Ellie yesterday, giving them time to reflect, unwind and relax.

I was also privileged to take a group of our Year 6 pupils to take part in a challenging Maths Reasoning session alongside children from other local schools, where the girls showed impressive ability, resilience and confidence.

On Tuesday after school, Mrs Priestner and I continued our special preparations with the children for their First Holy Communion. This week, the children took time to reflect thoughtfully on the ways in which they can continue to grow in their faith.

In addition, the whole school came together to celebrate Earth Day on Wednesday through story, writing and creative art, helping to spread the important message about caring for and protecting our world.

Many thanks for your continued support.

Mrs Preston



Living and Learning Together - Shining in our Faith



Class 1 'Shining Stars'

Class 1 have enjoyed a week full of new experiences this week. On Monday, the children arrived to see a brand-new den making kit in their outdoor area. They have spent all week using their imagination to turn the den into a school, a library and a house!



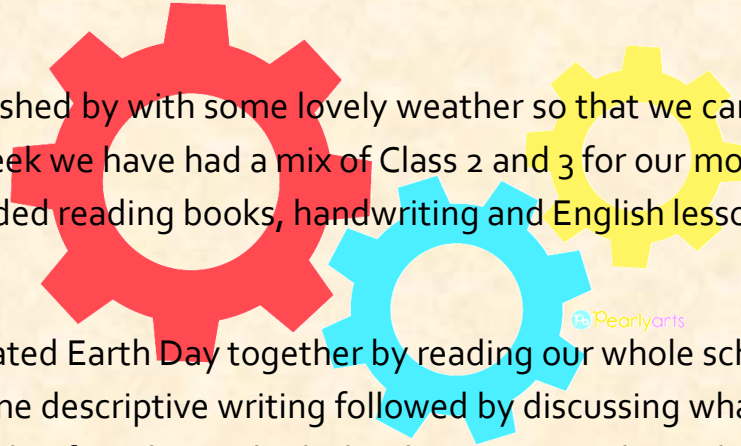
On Wednesday, we joined the rest of the school in celebrating Earth Day. We discussed all of the ways that we can work together to save our planet and make it a happy place to live. Class 1 had some wonderful ideas, and we used them to make posters and crafts.

On Thursday, Class 1 were delighted to welcome Ellie back into school for Yoga. We loved catching up with her and learning some new positions too!





Class 2 'Trailblazers'



Pearlyarts

Another busy week has rushed by with some lovely weather so that we can enjoy lots of time on the field at playtimes. This week we have had a mix of Class 2 and 3 for our mornings and it has been lots of fun to compare our Guided reading books, handwriting and English lessons.

On Wednesday we celebrated Earth Day together by reading our whole school book – 'Greta and the Giants' then we all did some descriptive writing followed by discussing what we would say to protest about damage to our world. After play we had a live lesson on Earth Day by the BBC.



In Science we did lots of sorting this week. We looked at the features of mammals, birds, reptiles and amphibians and sorted pictures into different sets.

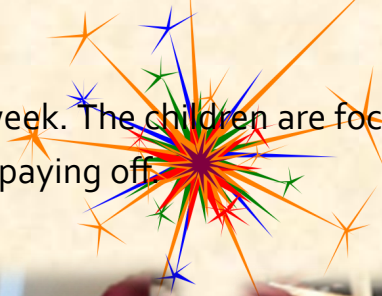
We then created lovely healthy dinners for a display on Healthy eating in PSHE.

We finished the week looking at some work by the artist Paul Klee and choosing colours to create some of our own artwork in his style.





Class 3 'Bright Sparks'



Class 3 has had yet another brilliant week. The children are focused, motivated, and giving their best — it's fantastic to see their hard work paying off.



Class 3 had a fantastic Earth Day this week. The children took part in the BBC Live Lesson and were fascinated by what they learned about carbon emissions and how our choices impact the planet. They then rose to a design challenge, creating thoughtful and imaginative ideas to show others how to take care of the world. Alongside this, they produced some wonderful descriptive writing and designed eye-catching placards and art work to share their messages.

Class 3 made a brilliant start to their new gymnastics topic last Friday with Ellie from WLSP. The children enjoyed exploring different balances and shapes, and they impressed us with their confidence and teamwork.





Awards Assembly



	Special Award -	Good Work Award
Class 1	Lillian O	Eleanor B
Class 2	Tommy G	Elliot H
Class 3	Caleb S	Bowen S
Headteacher's award	Maisy S	James R
Mathematician of the week	Arabella F	
Presentation award	Jenson L	
Attendance Award	Class 2 — 98.15%	



Attendance



Attendance for the week ending 24.04.26			
	No. of pupils	Attendance (%)	Rank
Class 1	16	95.14%	3
Class 2	18	98.15%	1
Class 3	23	95.17%	2

Important Dates

Monday, 4th May	Bank Holiday
Wednesday, 6th May	Whole School Mass for Mary, the Mother of Jesus
Thursday, 7th May	Polling Day (School is fully open)
Monday, 11th May	Key Stage 2 SATs week

Have a lovely weekend! From Mrs Preston & the staff of St Mary's

St Mary's Catholic
Primary School

Family Quiz Night



Thursday 30 April
3:30pm

- »» Refreshments & Hot Dogs
- »» Family Friendly Quiz
- »» Great prizes to be won



Upcoming PTA Events

**MARCH
16**
*Own Clothes Day for
Easter treats donation*

**MARCH
18**
3.30 - 4.30PM
"Easter bingo"

**APR
30**
3.30 - 4.30PM
"Family quiz night!"

**MAY
21**
3.30 - 5PM
"Family Fun Festival"

**JUN
22**
Donation of teddies for
the toy tombola

**JULY
03**
Donation of bottles for
the tombola and gifts
for the Rainbow Raffle

**JULY
04**
12.30 - 2.30PM
"Summer Fair"

**JULY
22**
12.30 - 1PM
Ice cream van!

**Thank you for
your support!**

Learn to Ride



The WLSP Learn to Ride and Level 1 programme is a great introduction to cycling for primary aged children.

Available for ages 7+

ABOUT

Our fully qualified and experienced instructors will aim to improve the participants riding ability and overall confidence.

Children must be accompanied by a responsible adult. Sessions take place on the tennis courts at Burscough Priory Academy. Please access the Main Car Park and make your way to the school's reception where our instructor will be there to greet you.

Please feel free to book multiple sessions and for more practice!

*** A limited number of helmets can be provided, but we encourage you to bring your own if possible - please contact us first before booking if you require a helmet

***** Children must bring their own bike *****



LOCATIONS AND DATES

Burscough Priory Academy,
Friday 20th February 2026

Learn To Ride, 9am - 12pm (3 x 1 hour sessions)
Level 1, 1pm - 2.30pm (£7.50)

£5 PER 1 HOUR SESSION

To book; <https://ec.schoolactivity.co.uk/>
For more info call: 01704 377982

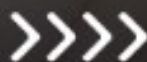


Parents and Carers, tell us about your experience of using childcare in Lancashire



Scan the QR code to
access our short survey

lancashire.gov.uk/childcare





St Mary's Catholic Primary School

Living and Learning Together – Shining in our Faith

Religious Education Summer Term Newsletter 2026

Important dates this term

The month of May is dedicated to Our Lady.

There will be mass on Wednesday, 6th May St Elizabeth's Church at 9.30am for families and children from Nursery - Y6.



THE ASCENSION OF THE LORD

14th May

After his Resurrection, Jesus appeared to his disciples over a period of forty days.

Ascension Day is when we celebrate Jesus' return to his Father in Heaven.

PENTECOST SUNDAY

24th May

This is the day we celebrate the coming of the Holy Spirit and the birthday of the Church.

THE MOST HOLY TRINITY

31st May

Today we celebrate our belief in the Trinity, the three persons of God:

The Father, the Son and the Holy Spirit.

THE MOST HOLY BODY AND BLOOD OF CHRIST

7th June

On this feast we give thanks to God for the gift of Jesus in the form of bread and wine.

THE MOST SACRED HEART OF JESUS

12th June

On this day we remember how much Jesus loves us all.

FATHER'S DAY

15th June

SAINTS PETER AND PAUL, APOSTLES

29th June

We celebrate the lives of these important saints who helped establish the Christian Church

RELIGIOUS EDUCATION
SUMMER TERM 2026
TO KNOW YOU MORE CLEARLY

Dear Parent(s)/Carer(s),

Our classes will be studying the new Religious Education Directory curriculum that covers the themes of 'To the Ends of the Earth' and 'Dialogue and Encounter'.

'TO THE ENDS OF THE EARTH'
(13th April – 22nd May)

Class 1 – The children will retell the story of Pentecost – a special celebration in the Church.

Class 2 - The children will sequence the events from Jesus' Resurrection to the coming of the Holy Spirit at Pentecost. They will also retell the story of the Conversion of Saul and learn about how the fruits of the Holy Spirit can transform their lives.

Class 3 – The children will study the Resurrection told in St John's gospel and make links with Matthew's account of Peter's declaration of faith. By looking at the Apostles Creed, they will explore their beliefs as Christians. Throughout May they will reflect on Mary being the Mother of the Church.

**SUGGESTIONS FOR
HOME ACTIVITIES**

Talk about good news in your family and how you shared it.

Ask your child to tell you the story of Pentecost and the work of the Holy Spirit.

'DIALOGUE & ENCOUNTER'
(8th June – 22nd July)

Class 1– The children will learn about the lives of St Peter and St Paul, and how they were friends of Jesus. They will then explore the music, food, smells, tastes and clothing from the Jewish faith.

Class 2– The children will start by studying the story of the Good Samaritan, thinking about Jesus' question 'Who is my neighbour?' They will then learn about the traditions of the Jewish laws, beliefs, worship and life.

Class 3– The children will begin the branch by looking at the life and work of St Paul. Later in the theme, they will learn about the five pillars of Islam and understand how Muslims in Britain today live out their beliefs.

**SUGGESTIONS FOR
HOME ACTIVITIES**

Look at a globe or an atlas. Find a special place and pray for the people of that country.

Discuss how we can look after our world and support our neighbours, near and far.

School Parking

Have you considered:

- Walking or cycling to school instead? This is a great way to contribute to a child's 60 minutes of activity a day and is easy to incorporate into your daily routine. Try it once a week at first and see how easy it can be.
- Parking nearby or getting off the bus two stops earlier and walking the rest of the way. If you live too far away to walk or need your car for your commute to work you can still walk part of the way. Adults in England should aim to take part in at least 150 minutes of moderate intensity physical activity each week.
- Car sharing is a great way to reduce congestion and save you pennies. Team up with other parents or carers who live nearby- share the cost and halve the hassle.

If you have a parking concern outside of your school report it to parking@lancashire.gov.uk

For more information on this leaflet please email the Road Safety Team at roadsafetyschool@lancashire.gov.uk

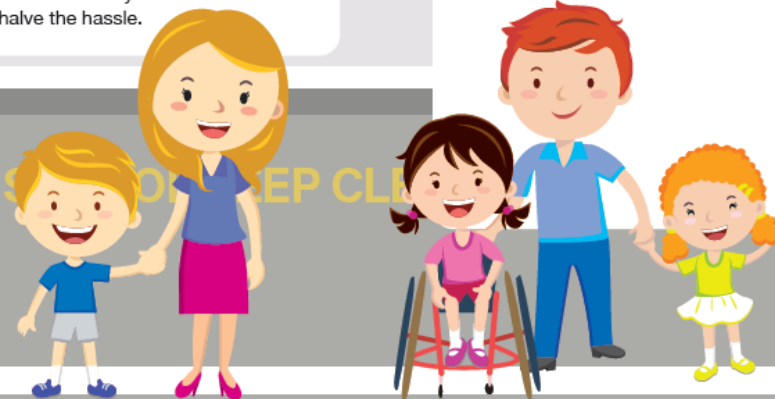


Better Health healthier families

Sign up at nhs.uk/betterhealth



SCHOOL



lancashire.gov.uk



A Guide to Parking Safely at Our Schools

Inconsiderate and dangerous parking around our schools has become a big problem, putting the safety of children and others at risk. We all want to keep our children safe around schools, so here are some top tips on how you can make a difference.

How can you help?

- ✓ Keep your speed down
- ✓ Turn your engine off - do not idle
- ✓ Leave the middle of the road free, with enough room for other road users to easily pass through
- ✓ Make sure your child leaves and enters your vehicle safely onto the pavement
- ✓ Check for pedestrians and cyclists before opening a car door
- ✓ Leave enough room on pavements for pedestrians, pushchairs & wheelchairs to get past
- ✓ Take care when reversing
- ✓ DO NOT PARK ON ZIG ZAG LINES

Please keep restricted areas clear

- ✓ Zig zags and school entrances
- ✓ Dropped kerbs
- ✓ Resident's driveways
- ✓ Opposite or within 10 metres of a junction- so that children can see cars and cars can see children.

Your questions answered

What would happen if I did park in a restricted area?

If you park in a restricted area you are putting children's lives in danger and for this reason school parking is regularly monitored and enforced. If you park in a restricted area you could receive a £70 fine.

Am I okay to stop on zig zag markings if I am only there a few minutes?

No, under no circumstances should you stop on zig zag markings at any time, these are there to protect school entrances and leave a clear view of the street for pedestrians.

Please park considerably around our schools and keep our children safe!

Don't forget...

Congestion around schools is one of the main reasons given for dangerous parking and there are other ways you could do the school run...



Never park on zig zags or block school entrances

St Mary's Catholic Primary School

Living and Learning Together – Shining in our Faith



St Mary's School Holiday Dates 2025/ 26

Autumn Term 2025

INSET: Monday 1 September 2025

INSET: Tuesday 2 September 2025

Mid Term Closure: Monday 27 October- Friday 31 October 2025 (inclusive)

Closure after school on: Friday 19 December 2025

Number of openings: **75**

Spring Term 2026

Re-open on: Monday 5 January 2026

Mid Term Closure: Monday 16 February - Friday 20 February 2026 (inclusive)

Closure after school on: Friday 27 March 2026

Number of openings: **55**

Summer Term 2026

Re-open on: Monday 13 April 2026

May Day Closure: Monday 4 May 2026

Mid Term Closure: Monday 25 May - Friday 5 June 2026

Closure after school on: Monday 27 July 2026

INSET: Thursday, 23 July 2026

INSET: Friday, 24 July 2026

INSET: Monday, 27 July 2026

Number of openings: **65**

Total number of openings – 195

(190 days for pupil + 5 INSET days for staff)